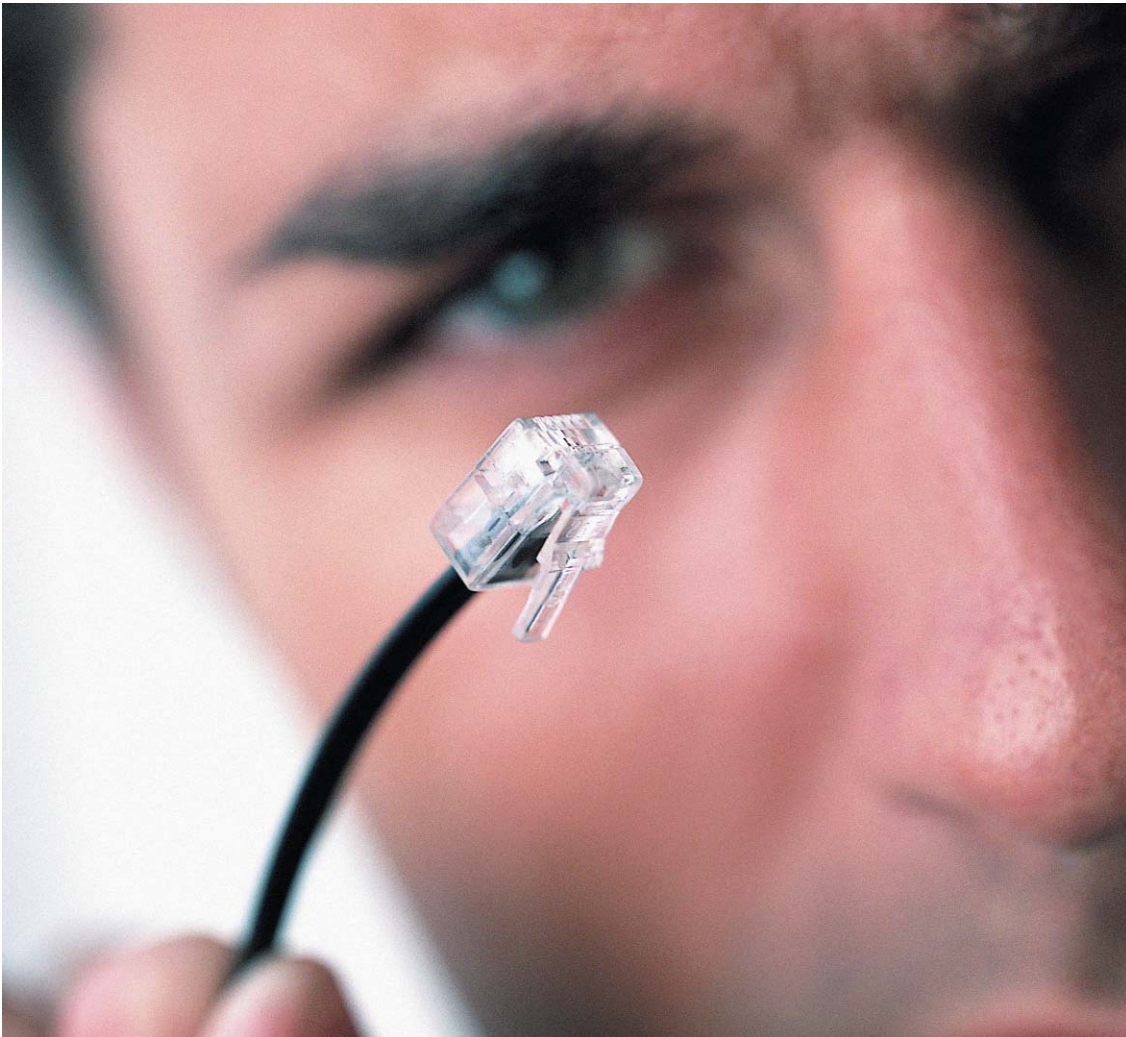


Alarm over IP (AoIP)



As the burglar alarm industry moves into the brave new world of networking and Internet monitoring, GE Security is leading the way. GE Security designed a whole new concept of remote communication and control and provides the security industry with a wall-to-wall solution for alarm transmission over IP (AoIP). Thanks to the GE Security AoIP solution you can monitor real-time multiple remote sites (bank branches, retail outlets, fuel stations network...) using the corporate network or a Virtual Private Network (VPN) on the Internet.



Dramatic savings on communication costs

Up to €1.5M / year for 2500 sites reporting alarms via the corporate network rather than dedicated monitored telephone lines.

Fully supervised link

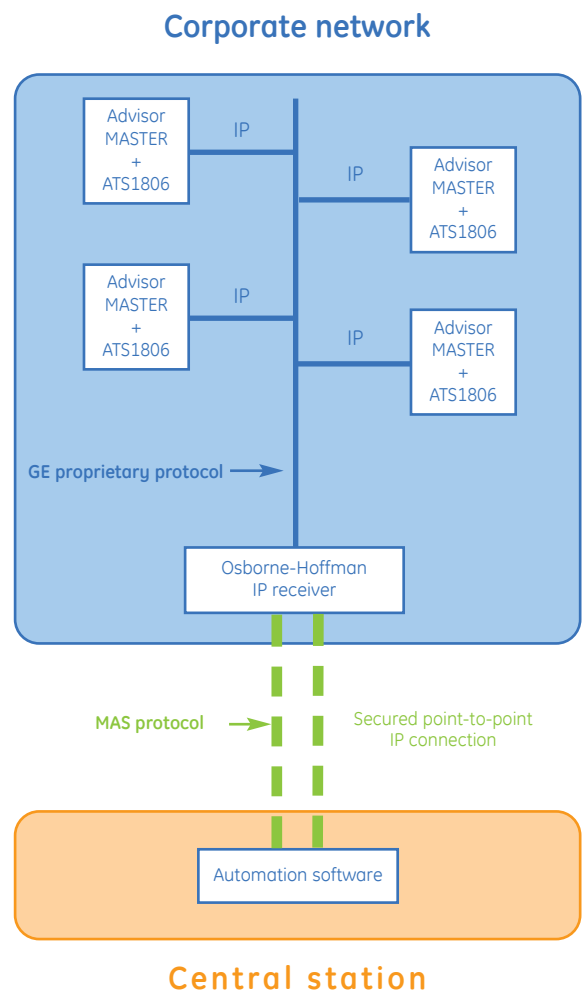
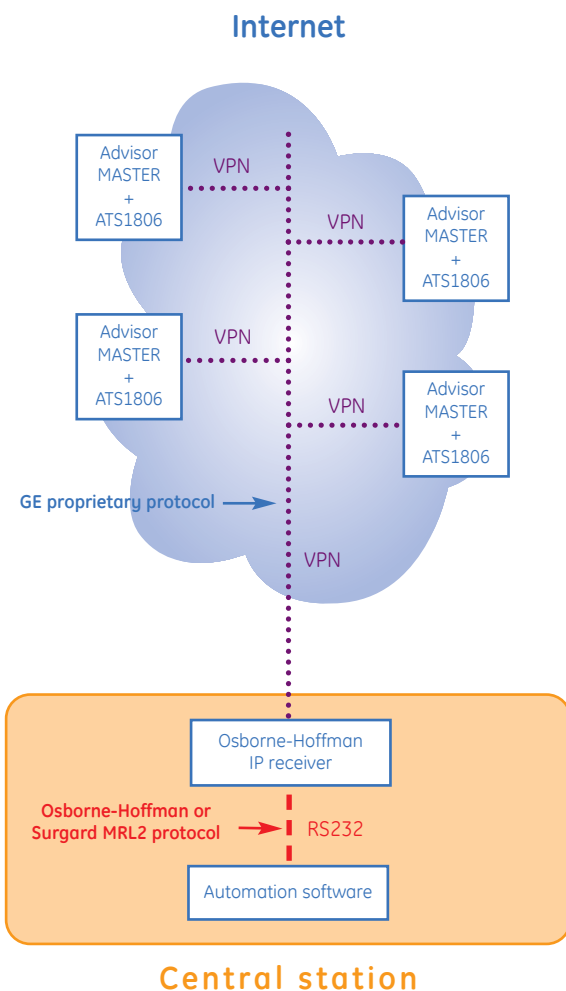
Any indication of tampering or network connection trouble is detected, which allows the network administrator or the central station to respond instantly.

Transmit access control events at no cost

Enhanced security and control thanks to the transmission of doors opening/closing, room accesses, card swiping and much more at no cost. Access events as well as technical alarms can be reported via IP to a dedicated receiver and/or to the main central station.

Infrastructure

Regular PSTN telephone lines can be removed or dedicated to voice. Older X25 infrastructures can be streamlined. AoIP is ready for future applications such as alarm video verification.

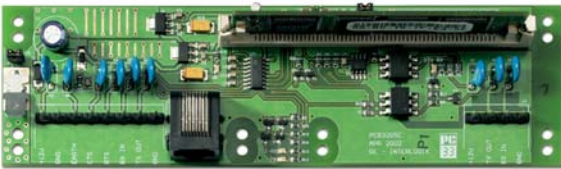


ATS1806 IP interface

The ATS1806 IP interface connects to the computer and printer interface (ATS1801) inside the Advisor MASTER housing. It is simple to install and easy to configure using a Web browser.

In case of IP transmission failure, the Advisor MASTER automatically switch back to PSTN, ISDN or GSM alarm transmission.

- Encapsulates SIA, XSIA or CID into TCP/IP
- Reports to three central stations (dual, split or back-up modes)
- Static (fixed) IP address
- Extremely low bandwidth requirements
- Variable polling (1-255 sec)
- Triple DES and 128-bit Two Fish data encryption
- Built-in firewall
- Flash ROM for remote upgrade
- 10 Mbps RJ45 Ethernet



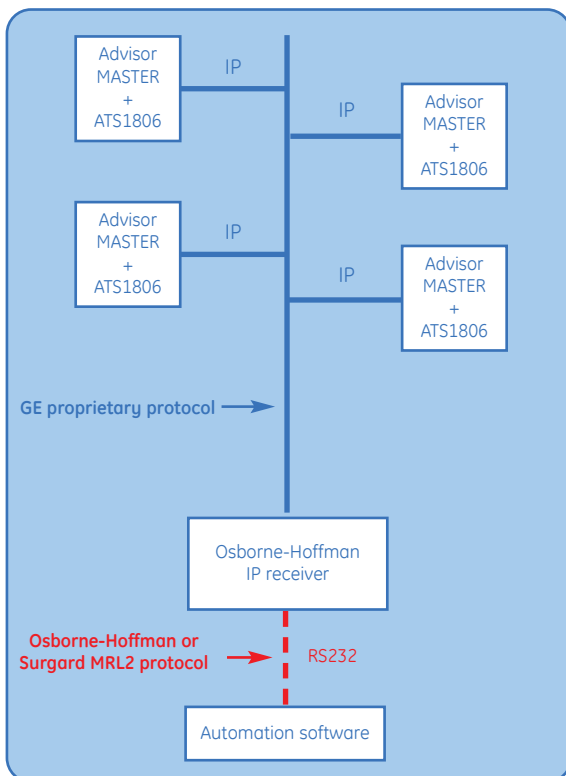
Osborne-Hoffman IP receiver

The Osborne-Hoffman IP receiver serves the proprietary monitoring provider as well as the contract central station. The IP receiver will monitor all alarm activity and control communication of the Advisor MASTER using the ATS1806.

As a dedicated server in any LAN/WAN, the IP receiver can monitor up to 10.000 Advisor MASTER with very little bandwidth required. Multiple IP receivers may be used to support the dual, split or backup IP alarm transmission of the ATS1806. Two e-mail addresses are also available for reporting by event.

- Java based, runs on Windows 2000 and Linux
- Connects over networks using Ethernet with 10-BaseT/100-BaseT
- Network heartbeat sent to automation software for supervision and immediate reporting
- Monitors up to 10.000 panels
- Reports to the automation software either via RS232 using the Osborne-Hoffman or the Surgard MRL2 protocols or via IP using the MAS (Monitoring Automation System) protocol. The MAS protocol can be made available upon signing a non-disclosure agreement.
- Available either in software version or supplied pre-installed, tested and ready to be connected on a Dell PC

Corporate network



Control Advisor MASTER panels over IP

The ATS1806 supports a total of 10 IP addresses. Three for central station reporting and seven for connection to PC's running the Advisor MASTER software TITAN™ or ALLIANCE™.

Thanks to a Software Development Kit (SDK) based on ActiveX technology, central station developers can also integrate a subset of the TITAN™ commands into the automation software in order to control (arm, disarm, inhibit zones...) Advisor MASTER panels without dedicated PC.

Software

ATS8100	TITAN™ Single-user software (Programming + control + diagnostics)
ATS8300	ALLIANCE™ Multi-user software (Programming + control + video integration)
ATS8400	ATS Communication Engine SDK

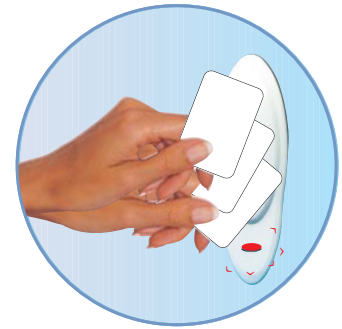
Advisor MASTER

The Advisor MASTER family of alarm control panels and peripherals is engineered to fulfil the security needs of premises such as bank branches, supermarkets, warehouses or office buildings. Through the integration of alarm and access control, the Advisor MASTER not only detects burglars at night but also helps you to protect staff and assets during the day, manage ATMs replenishment procedures or loading docks access and cope with the increasing flexibility of the working hours. Available with software and manuals in 21 languages, the Advisor MASTER is the first pan-European security system allowing for instance to interrogate Spanish, Czech or Polish control panels from a central point, using the English version of TITAN™.

- ARITECH burglar alarm technology
- 32, 64 or 256 hardwired or wireless (433MHz/868MHz) zones per control panel
- 16 to 48 doors per control panel
- Up to 11000 PIN or card-holders per control panel
- Panels networking (16) via RS485, optical fibre or modem using TITAN™
- Panels networking (32 fully loaded) via IP using Alliance™
- Built-in PSTN modem
- Optional ISDN-B, ISDN-D or GSM modules
- Voice reporting
- Audio listen-in integrated into the SIA messages
- Remote system diagnostics in line with the EN50131 using TITAN™
- Integration of GE Security digital video multiplexers/recorders using ALLIANCE™
- Approved by the toughest certification bodies

GE Security EMEA
Excelsiorlaan 28-30
B-1930 Zaventem

For more information, please contact
francois.dequenne@ge.com
serge.coppens@ge.com



No PIN code
Badge 3x to arm



GE imagination at work